


ST33 Ceiling light - Samsung SMD 5630

Aluminium casting, fixed, incl. driver. Very high performance Samsung LEDs SMD 5630, 120 Lm/Watt, 20 - 38 Watt, white, silver or black lacquered.

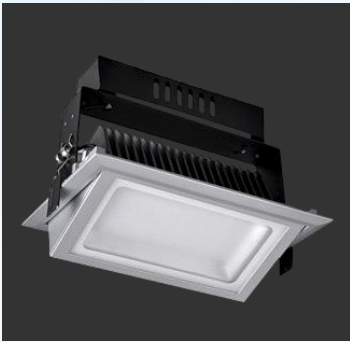
Technical data

LED Module producer	Samsung	Dimmable	not dimmable
Technology	SMD 5630	Appliance class	II
Heatsink	Passive cooling	IP class	IP40
CRI	>80	Voltage	230 V
Surge current limit	yes	Power factor (PF)	>0,90
Type	delayed switch on	System efficiency	120 Lm/W (A++)

Watt	A (mm)	B (mm)	C (mm)		Kg
20	230	145	135	227 x 132	2
38	230	145	135	227 x 132	2

Beam angle	120°
Colour temperature	827 - 830 - 840 - 860
Product colour	Black lacquered (Bk) - Light grey lacquered (Si) - White lacquered (Wh)

DATASHEET



Life time and warranty

Warranty:	2 years
Availability of spare parts:	>10 years after last delivery
Availability for re-order :	>2 years after last delivery
Life time:	>35.000 hours (70 % light transmission)

CE Conformity

The above mentioned lights are in accordance with EU-Directives 2006/95/EC (low voltage directive), 2004/108/EC (EMC-Directive), 2009/125/EC (Ecodesign requirements) and 2011/65/EU (RoHS-directive). The standards EN55015, EN 60598, EN 61000, EN 61347 and EN 61547 have been applied.

A declaration of CE Conformity will be supplied together with the product.

Brand Inside®

With our **Brand Inside®** guarantee we guarantee as one of the few suppliers, that only brand products are inside. „What is on the packaging will be also inside!“. You will not find cloned products, "No-Name" products, B-quality, etc. from us.

Disposal

This product is in conformity with directive 2002/96/EU. Do not dispose this product with other household waste. Instead, it should be disposed at a designated collection point for the recycling of waste electrical and electronic equipment.

Limitation of liability

Subject to modifications. Please ensure you are using the latest version of this datasheet.

DATASHEET