


SQ11 Ceiling light - Epistar COB

Aluminium casting, swivable, incl. driver. With Epistar COB LEDs, 75 lm/Watt. 5 - 20 Watt, 1 - 4 heads. Aluminium anodized, black front ring.

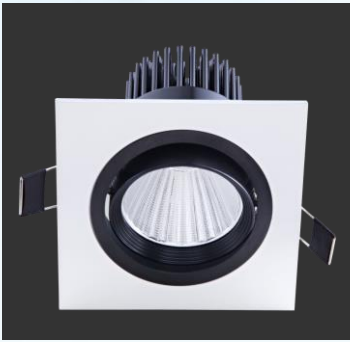
Technical data

LED Module producer	Epistar	Dimmable	not dimmable
Technology	COB	Appliance class	II
Heatsink	Passive cooling	IP class	IP40
CRI	>80	Voltage	230 V
Surge current limit	yes	Power factor (PF)	>0,90
Type	delayed switch on	System efficiency	75 Lm/W (A+)

Version	Watt	A (mm)	B (mm)	C (mm)		Kg
1-Fl.	1 x 5	92	92	73	Ø75	0,25
2-Fl.	2 x 5	175	92	73	155 x 73	0,46
3-Fl.	3 x 5	250	92	73	230 x 73	0,63
4-Fl.	4 x 5	175	175	73	155 x 155	0,78

Beam angle	30° - 45° - 60°
Colour temperature	830 - 840 - 850
Product colour	Aluminium anodized (Al)

DATASHEET



Life time and warranty

Warranty:	2 years
Availability of spare parts:	>10 years after last delivery
Availability for re-order :	>2 years after last delivery
Life time:	>35.000 hours (70 % light transmission)

CE Conformity

The above mentioned lights are in accordance with EU-Directives 2006/95/EC (low voltage directive), 2004/108/EC (EMC-Directive), 2009/125/EC (Ecodesign requirements) and 2011/65/EU (RoHS-directive). The standards EN55015, EN 60598, EN 61000, EN 61347 and EN 61547 have been applied.

A declaration of CE Conformity will be supplied together with the product.

Brand Inside®

With our **Brand Inside®** guarantee we guarantee as one of the few suppliers, that only brand products are inside. „What is on the packaging will be also inside!“. You will not find cloned products, "No-Name" products, B-quality, etc. from us.

Disposal

This product is in conformity with directive 2002/96/EU. Do not dispose this product with other household waste. Instead, it should be disposed at a designated collection point for the recycling of waste electrical and electronic equipment.

Limitation of liability

Subject to modifications. Please ensure you are using the latest version of this datasheet.

DATASHEET