

OF40 Flood light - Bridgelux COB

Aluminium casting, incl. driver. With Bridgelux LED / Meanwell driver.

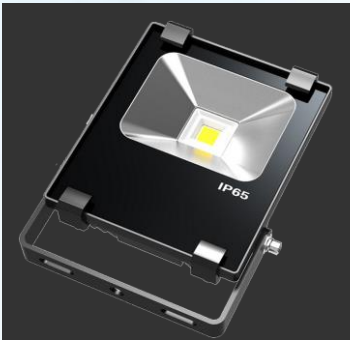
Technical data

LED Module producer	Bridgelux	Dimmable	not dimmable
Technology	COB	Appliance class	I
Heatsink	Passive cooling	IP class	IP65
CRI	>80	Voltage	230 V
Surge current limit	yes	Power factor (PF)	>0,90
Type	delayed switch on	System efficiency	100 Lm/W (A++)

Version	Watt	A (mm)	B (mm)	C (mm)	Kg
A	10	159	111	54	0,7
A	20	200	172	57	1,2
A	30	253	194	95	2,6
A	50	282	207	104	2,6
A	70	282	220	117	3,2
A	100	282	250	130	5,5
A	150	282	387	189	6,2
A	200	459	330	177	8,5
B					

Beam angle	60/120°
Colour temperature	830 - 840 - 860
Product colour	Black lacquered (Bk)

DATASHEET



Life time and warranty

Warranty:	2 years
Availability of spare parts:	>10 years after last delivery
Availability for re-order :	>2 years after last delivery
Life time:	>35.000 hours (70 % light transmission)

CE Conformity

The above mentioned lights are in accordance with EU-Directives 2006/95/EC (low voltage directive), 2004/108/EC (EMC-Directive), 2009/125/EC (Ecodesign requirements) and 2011/65/EU (RoHS-directive). The standards EN55015, EN 60598, EN 61000, EN 61347 and EN 61547 have been applied.

A declaration of CE Conformity will be supplied together with the product.

Brand Inside®

With our **Brand Inside®** guarantee we guarantee as one of the few suppliers, that only brand products are inside. „What is on the packaging will be also inside!“. You will not find cloned products, "No-Name" products, B-quality, etc. from us.

Disposal

This product is in conformity with directive 2002/96/EU. Do not dispose this product with other household waste. Instead, it should be disposed at a designated collection point for the recycling of waste electrical and electronic equipment.

Limitation of liability

Subject to modifications. Please ensure you are using the latest version of this datasheet.

DATASHEET