

EPISTAR

CL3528 Flexible strip - SMD 3528 LEDs - Epistar SMD 3528

Taiwan Epistar SMD 3528 LEDs, 85 Lm / Watt. With heat resistant 3M double sided tape on the backside. IP20, cuttable every 50 mm. Beam angle 120°.

Also deliverable in IP67 and IP68.

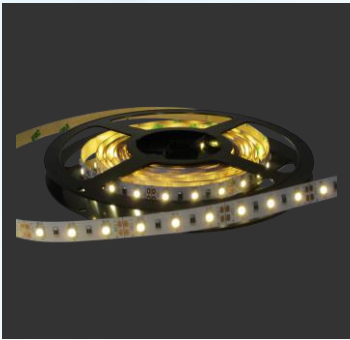
Technical data

| | | | |
|---------------------|-----------------|-------------------|----------------|
| LED Module producer | Epistar | Dimmable | dimmable |
| Technology | SMD 3528 | Appliance class | II |
| Heatsink | Passive cooling | IP class | IP20 |
| CRI | >80 | Voltage | 24 V |
| Surge current limit | no | Power factor (PF) | |
| Type | | System efficiency | 100 Lm/W (A++) |

| Watt | A (mm) | B (mm) | Kg |
|------|--------|--------|-----|
| 48 | 10.000 | 8 | 0,3 |
| 96 | 10.000 | 8 | 0,3 |
| 192 | 10.000 | 10 | 0,3 |

| | |
|--------------------|---------------------------------|
| Beam angle | 120° |
| Colour temperature | 830 - 840 - 860 - B - G - R - Y |
| Product colour | White lacquered (Wh) |

DATASHEET



EPISTAR

Life time and warranty

| | |
|------------------------------|---|
| Warranty: | 2 years |
| Availability of spare parts: | >10 years after last delivery |
| Availability for re-order : | >2 years after last delivery |
| Life time: | >35.000 hours (70 % light transmission) |

CE Conformity

The above mentioned lights are in accordance with EU-Directives 2006/95/EC (low voltage directive), 2004/108/EC (EMC-Directive), 2009/125/EC (Ecodesign requirements) and 2011/65/EU (RoHS-directive). The standards EN55015, EN 60598, EN 61000, EN 61347 and EN 61547 have been applied.

A declaration of CE Conformity will be supplied together with the product.

Brand Inside®

With our **Brand Inside®** guarantee we guarantee as one of the few suppliers, that only brand products are inside. „What is on the packaging will be also inside!“. You will not find cloned products, "No-Name" products, B-quality, etc. from us.

Disposal

This product is in conformity with directive 2002/96/EU. Do not dispose this product with other household waste. Instead, it should be disposed at a designated collection point for the recycling of waste electrical and electronic equipment.

Limitation of liability

Subject to modifications. Please ensure you are using the latest version of this datasheet.

DATASHEET